

double backstay linked with runners only for racing version  
 single backstay for cruise version

measurements for reefing point on mainsails are not mandatory:  
 it will be recommended that the second reefing point bring the  
 mainsail area down to 40% or more, third reefing point reduces  
 the mainsail to a kind of storm mainsail, relating to wind  
 conditions of the sailing zone; mainsail base is hoisted on the  
 boom, and fitted on the mast with sail slides and luffshuttle (or  
 similar) cars;  
 to support properly the mainsail's higher part a set of full length  
 battens should be adopted;

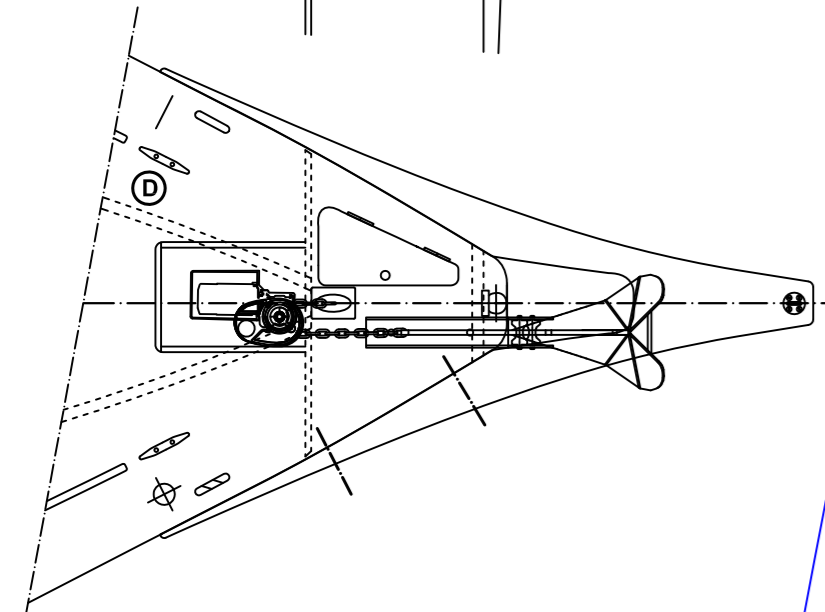
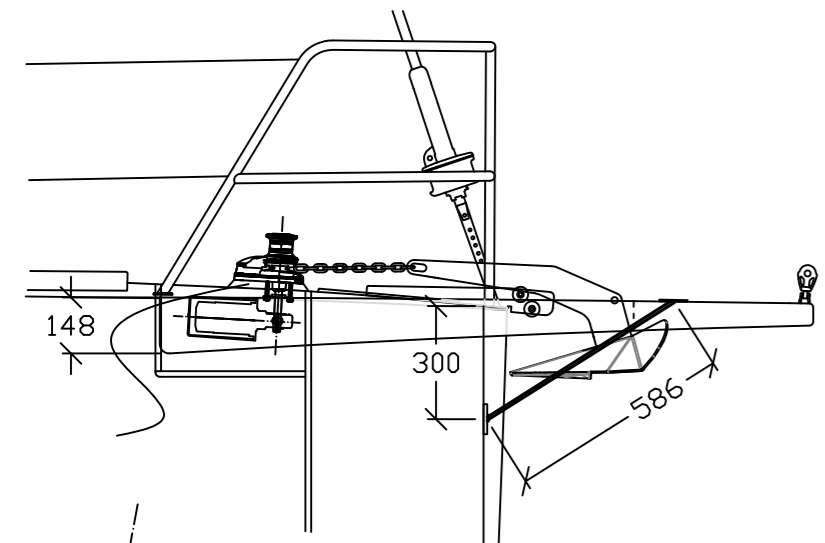
bow sails racing: low overlap jib 105% J on forestay, reefable ;  
 a code zero hoisted on bowsprit with a dedicated furler for  
 lighter winds; 7/8 gennaker may be hoisted on the bowsprit or a  
 bigger masthead gennaker

bow sails cruising version: low overlap jib 105% J on jib furler ; a  
 code zero hoisted on bowsprit with a dedicated furler for lighter  
 winds; 7/8 gennaker may be hoisted on the bowsprit

mainsail : green is for cruising version, blue for racing one  
 gennaker: blue for racing masthead gennaker

P: 1091 cm  
 E: 415 cm  
 J: 334 cm  
 I: 1100 cm (on forestay)

P,E,J and I dimensions must be  
 verified on rigged boat



bow area: cruise version with electric  
 winlass, delta anchor, bow roller  
 and jib furler

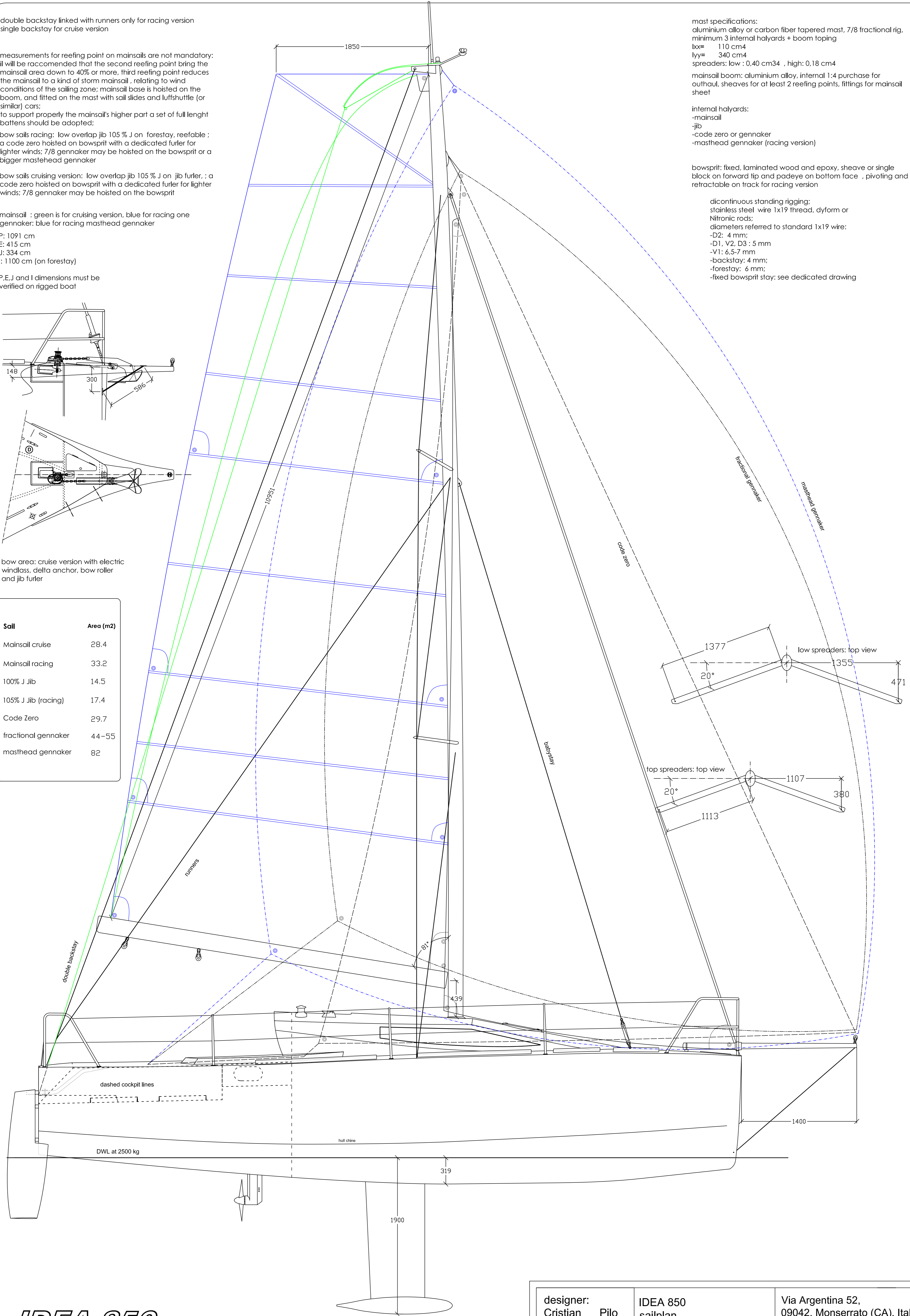
Sail	Area (m2)
Mainsail cruise	28.4
Mainsail racing	33.2
100% J Jib	14.5
105% J Jib (racing)	17.4
Code Zero	29.7
fractional gennaker	44-55
masthead gennaker	82

mast specifications:  
 aluminium alloy or carbon fiber tapered mast, 7/8 fractional rig,  
 minimum 3 internal halyards + boom topping  
 lx= 110 cm4  
 ly= 340 cm4  
 spreaders: low : 0,40 cm34 , high: 0,18 cm4  
 mainsail boom: aluminium alloy, internal 1:4 purchase for  
 outhaul, sheaves for at least 2 reefing points, fittings for mainsail  
 sheet

internal halyards:  
 -mainsail  
 -jib  
 -code zero or gennaker  
 -masthead gennaker (racing version)

bowsprit: fixed, laminated wood and epoxy, sheave or single  
 block on forward tip and padeye on bottom face , pivoting and  
 retractable on track for racing version

discontinuous standing rigging:  
 stainless steel wire 1x19 thread, dyform or  
 Nitronic rods;  
 diameters referred to standard 1x19 wire:  
 -D2: 4 mm;  
 -D1, V2, D3 : 5 mm  
 -V1: 6,5-7 mm  
 -backstay: 4 mm;  
 -forestay: 6 mm;  
 -fixed bowsprit stay: see dedicated drawing



**IDEA 850**

print A1 format

designer: Cristian Pilo	IDEA 850 sailplan study plan	Via Argentina 52, 09042, Monserrato (CA), Italy info@modernwoodenboat.com www.modernwoodenboat.com
DATE: Nov. 2015	SCALE 1:20	