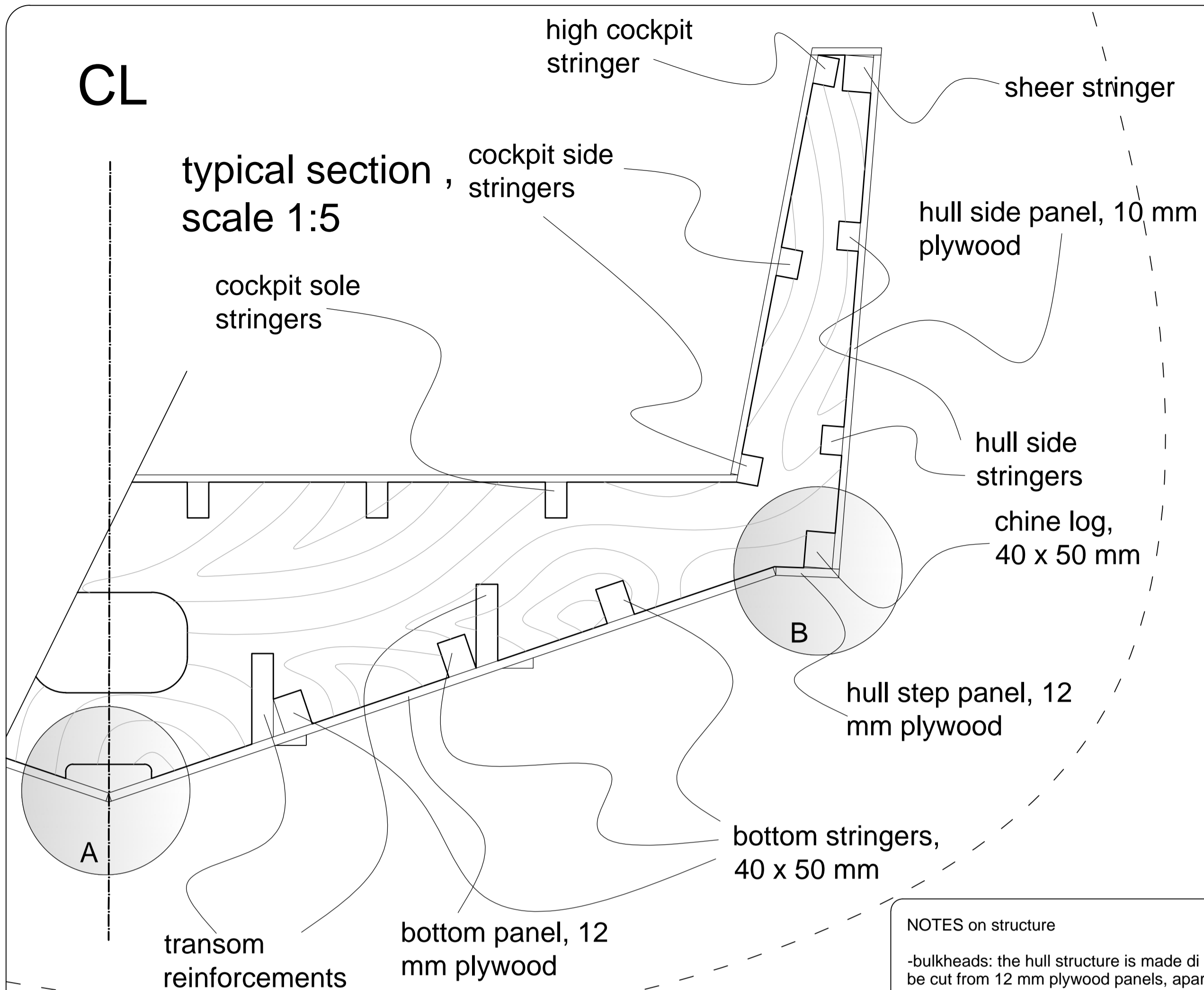
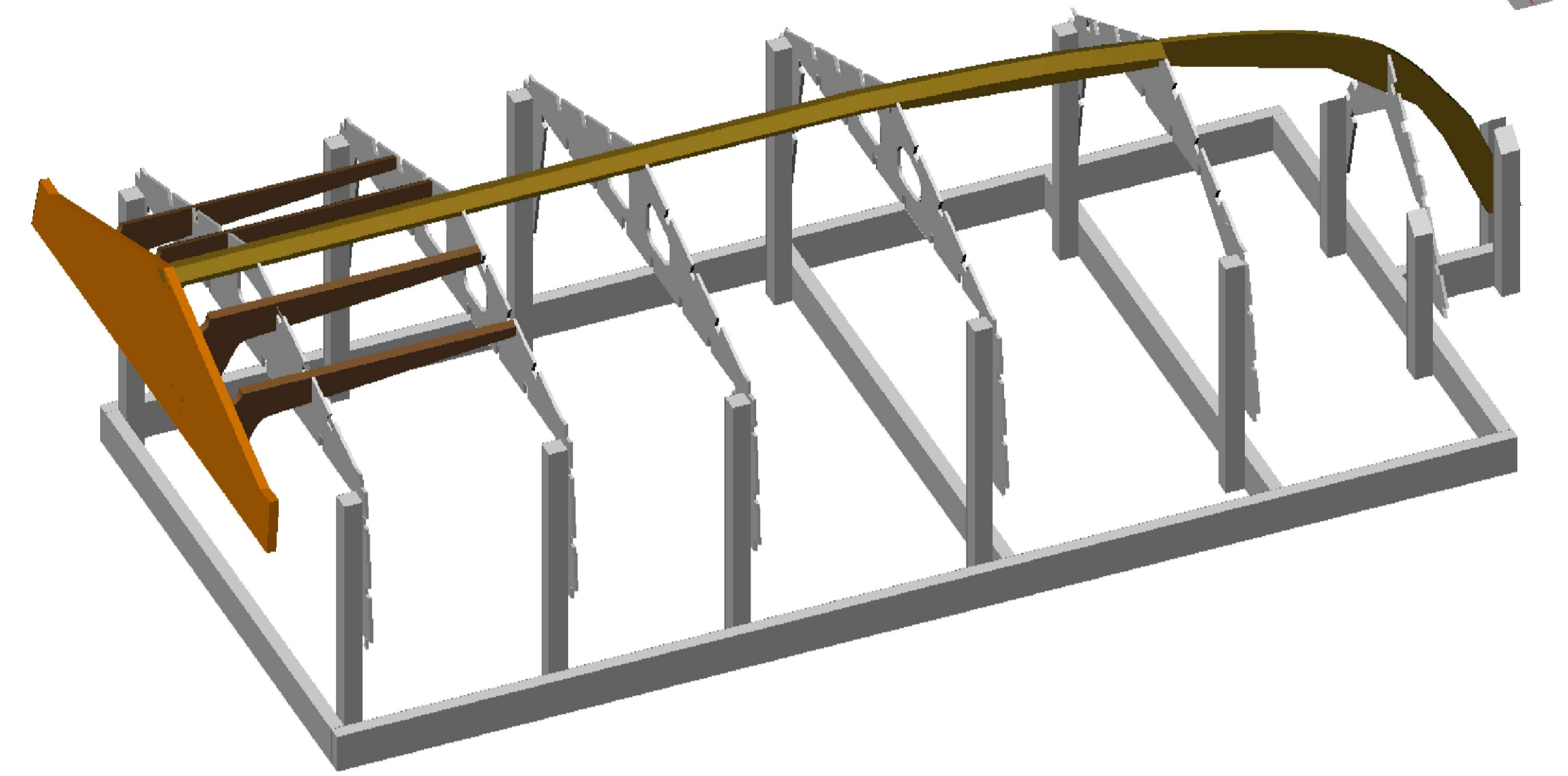
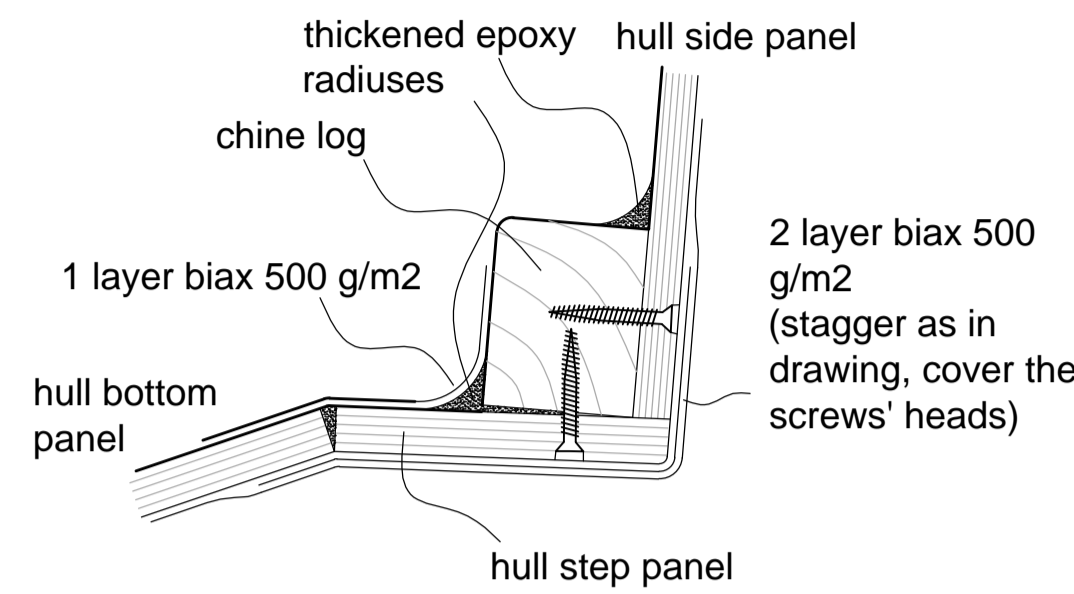


CL

typical section , scale 1:5



detail B scale 1:2

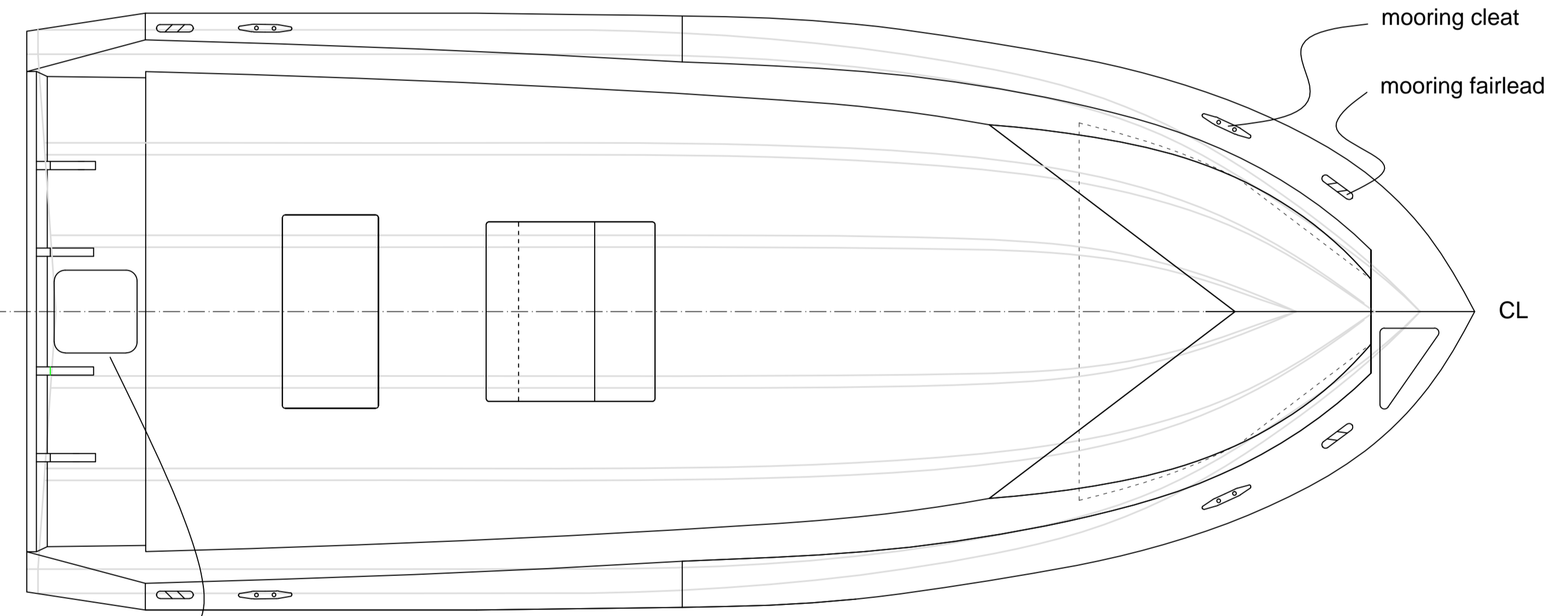
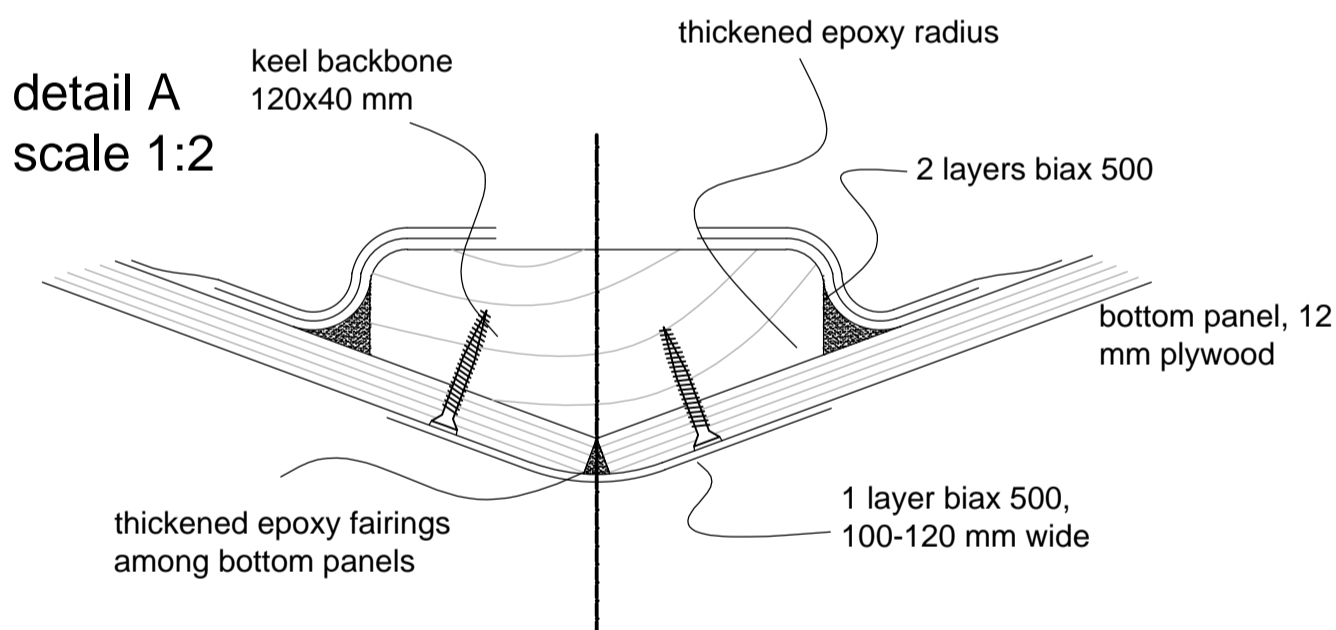


3d view of assembly scaffold with transom, transom reinforcements, bulkheads and keel backbone set in place; once that you put in place the stempost, fasten it on the floor so the it won't be bent from one side to another when you put in place the stringers; if you find that vertical elements are weak and bulkheads tends to move, brace them with other screwed or nailed boards and battens

NOTES on structure

- bulkheads: the hull structure is made di 6 bulkhead and a transom , all have to be cut from 12 mm plywood panels, apart form transom (36 mm thickness , 3 layers of 12 mm plywood)
- keel backbone: is basically made by a plywood stempost (can be done in solid wood too) and a 120x40 plank as backbone, glued together and on the bulkheads
- stringers: bulkheads are linked by set of stringers on bottom, chine stringer , sides, cockpit
- floors: to stiffen the bottom five floors will be glued on the bottom, each one amid the two surrounding bulkheads; glue in place once you turned the hull, bond them as bulkheads;
- steering console support beams: the steering console has to be bolted on the deck (see details) on properly placed solid wood beams
- hull planking: 12 mm okumè plywood for bottom, 10 mm for sides, split in two layers of 5mm plywood in the fore part
- plywood edges: all the edges have to be covered with a layer of glass tape or with a solid wood batten, protect them only with liquid resin layers won't guarantee from rotting
- engine bolting: engine lean on an alloy plate on external transom face, on the internal face place bolts with a 60x60 square alloy counterplates.

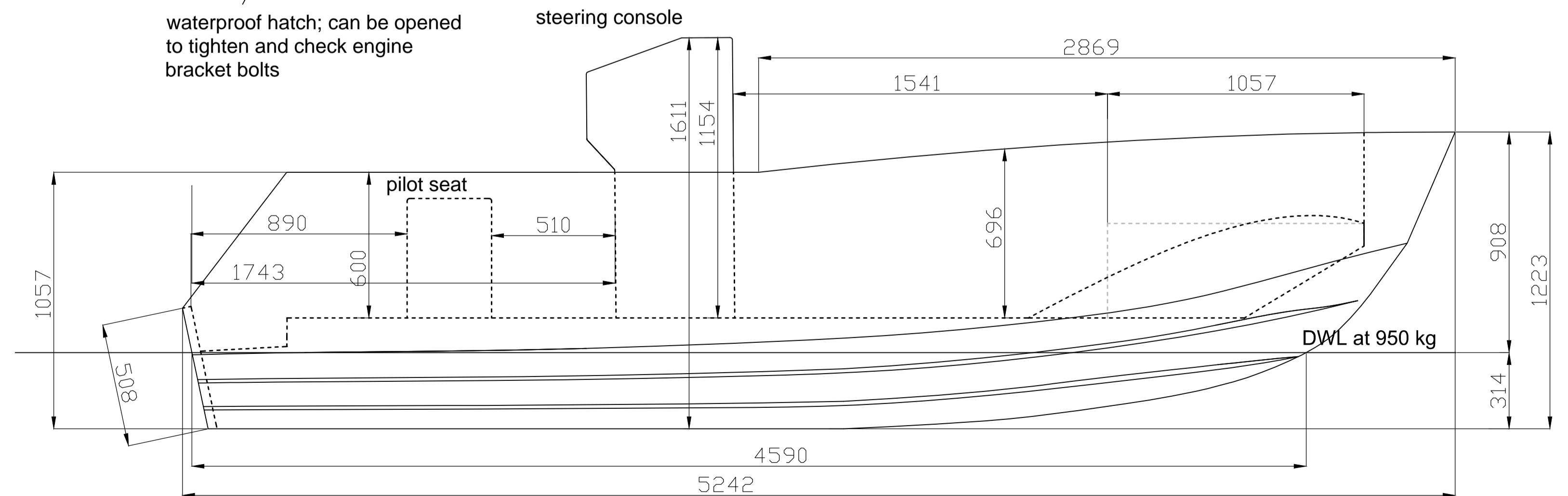
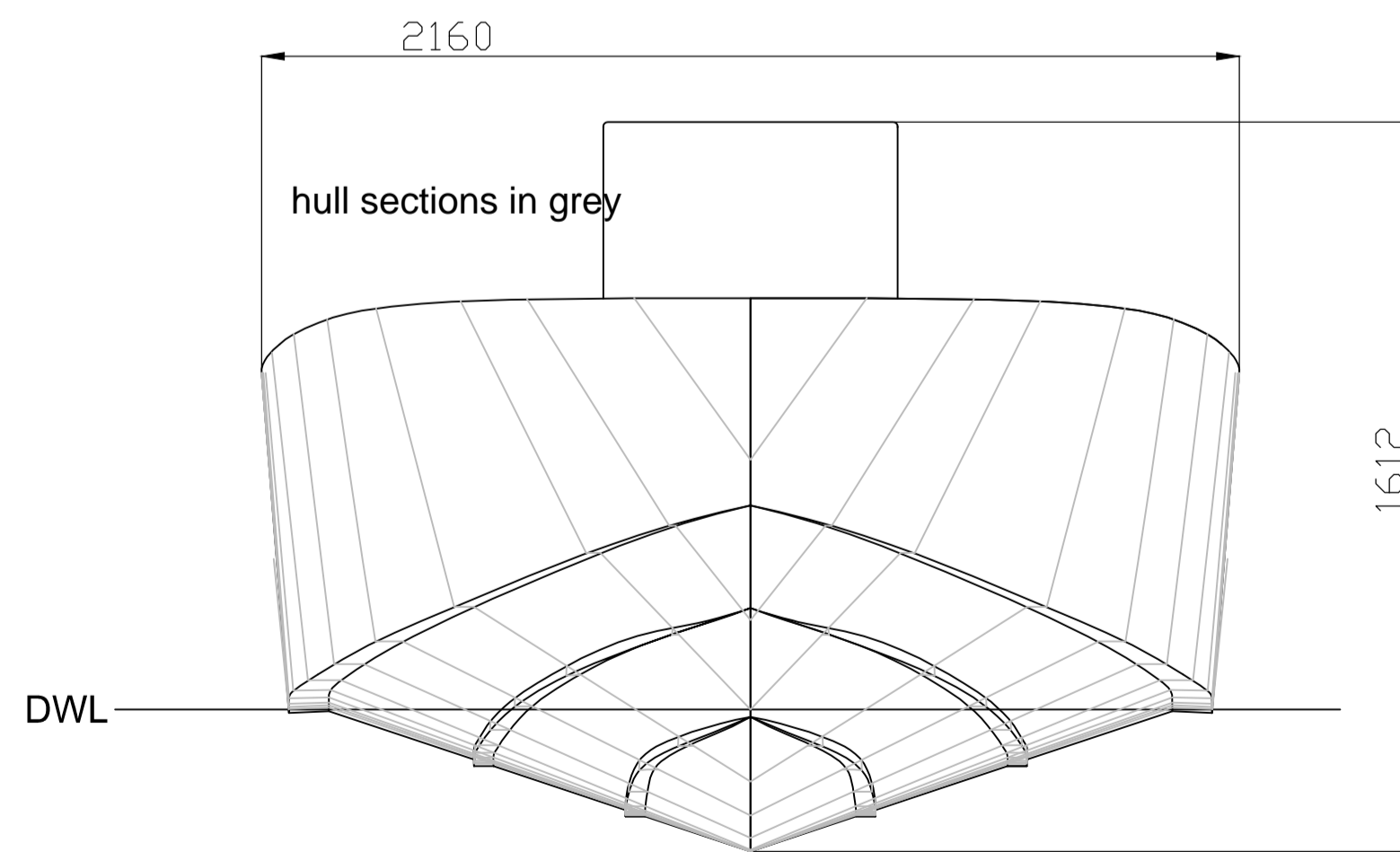
detail A scale 1:2



Crispy 520

main specifications:

- Overall lenght: approx. 5,8 m
- Hull lenght: 5,24 m
- Waterline hull lenght : 4,59 m
- Maximum beam: 2,16 m
- Hull Draft: 0,32 m at 950 kg
- Daft with engine: approx. 0.65 m
- Design displacement: 950 kg
- Maximum displacement: 1200 kg
- Hull weight: approx. 440 kg
- Hull + engine weight: approx 540 kg
- Total hull height: 1,61 m (with steering console)
- Powerplant: outboard single engine max 80 HP (recommended 40-60 HP)
- Maximum speed at design displacement with 40 HP engine: approx 29 knots
- fuel tank: 60-80 litres



- steering console and pilot seat: they may be home built or any commercial one may be fitted on board ; position is not mandatory, avoid to go install them much forward since ther boat's planing behaviour will be compromised (too much weight on the bow)
- bow seat are optionals
-engine shaft length : transom height is 508 mm , that is to say 20 inches , take this measurement as a reference to select the proper engine shaft size ; for most of the engines a L size should be the right one

Designer: Cristian Pilo	Crispy 520	Print A1 format	Via Argentina 52, 09042, Monserrato (CA), Italy info@modernwoodenboat.com www.modernwoodenboat.com
DATE: Sep. 2013	Study plans	SCALE 1:15	