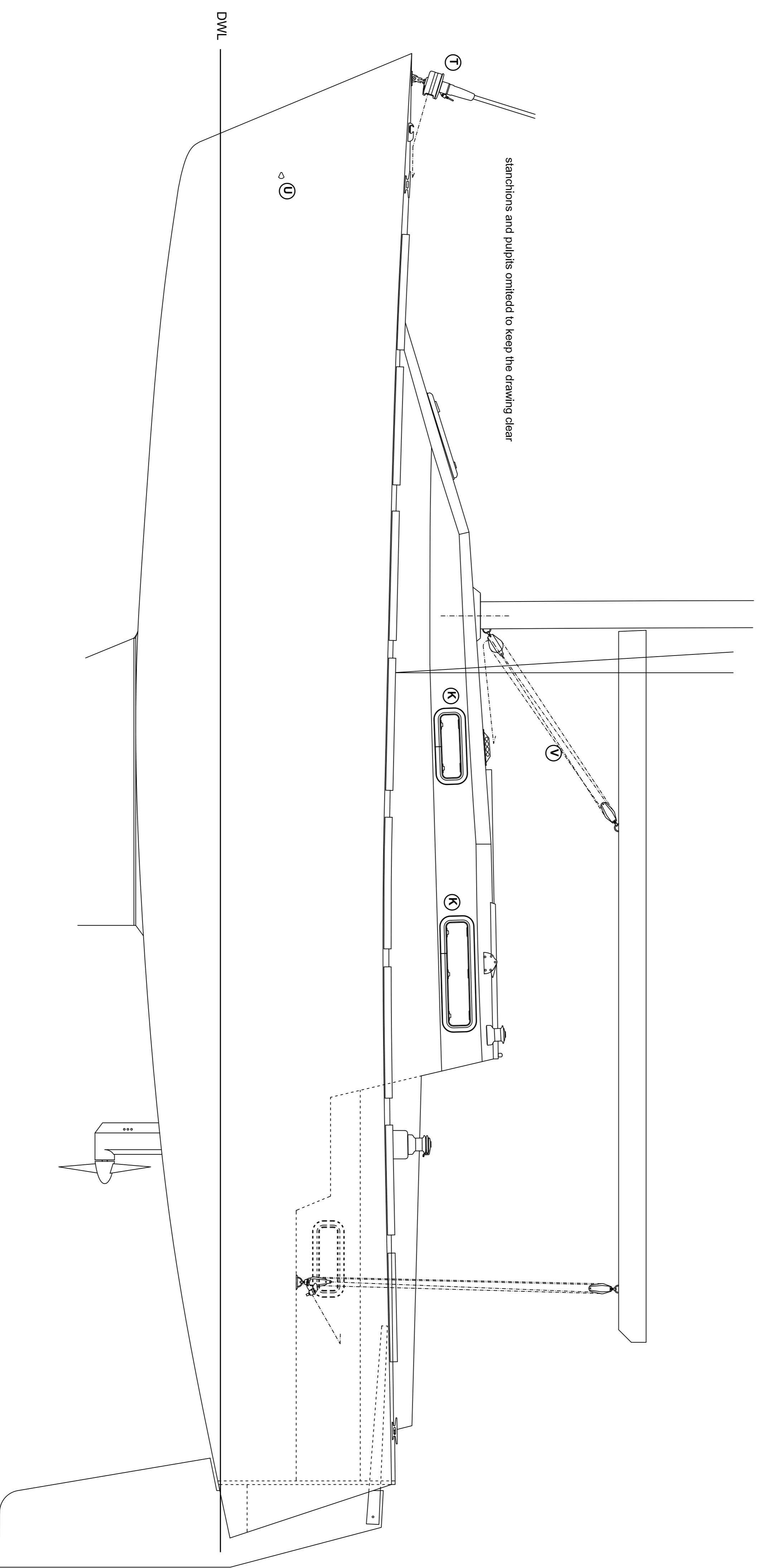
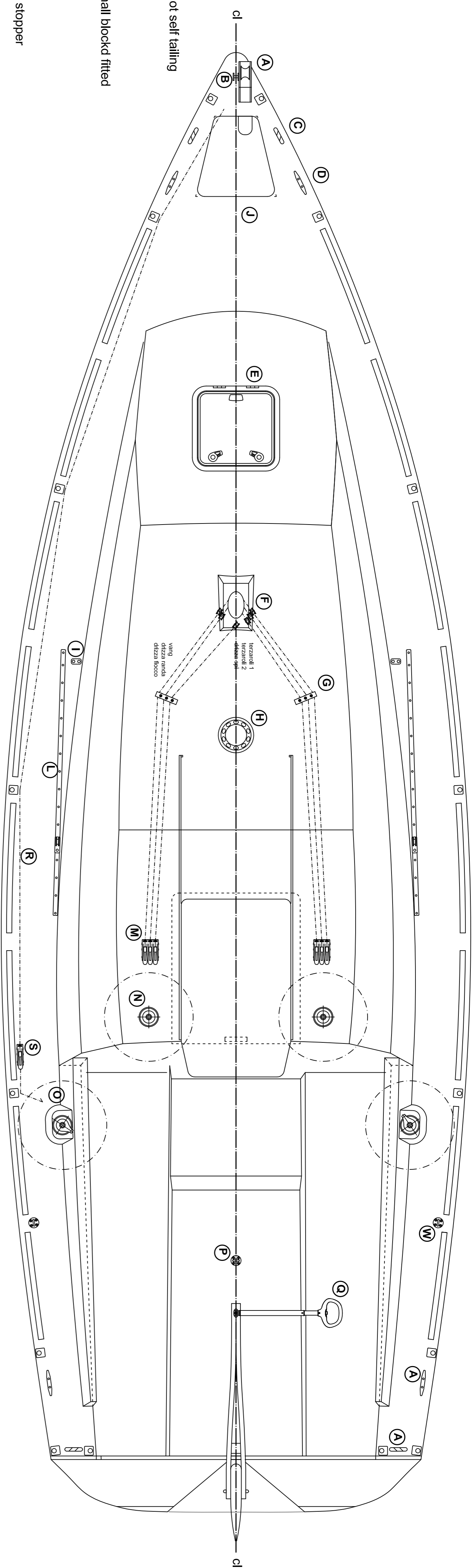


Index:

- A: anchor ss steel commercial bow roller
- B: forestay chainplate (see details in drawing 15)
- C: mooring line fairlead
- D: ss steel or alloy mooring cleat 15 cm or bigger
- E: hatch; dimension approx. 50x50 cm
- F: mast step blocks for halcyards and reefing lines
- G: three sheaves organizer
- H: air-fan UFO type self feeded with fotovoltaic micropanel
- I: shrouds chainplates (see details in drawing 15)
- J: manual or electric operated anchor windlass (optional)
- K: coachroof side hatches
- L: jib track with push-pin block position control
- M: halcyards stoppers (2 blocks suited for 8 mm diameter lines)
- N: secondary winches for halcyards, reefing lines and secondary lines; size 8 not self tailing
- O: primary primary per jib and gennaker sheets; size 16 self tailing
- P: mainsail sheet swivel cleat base with ratchet block
- Q: rudder telescopic tiller
- R: jib furler line; lead it from bow to cockpit side stopper (S) with fairlead or small block fitted on stanchions
- S: jib furler line single stopper
- T: jib furler
- U: anchor lock drain (one each side)
- V: vang 4:1 purchase 4:1 paranco 4:1 del vang, which operated and locked on stopper
- W: padeye and stand-up block for spinnaker/gennaker sheet



designer: Cristian Pilo	Petrel 28 deck gear and fittings STUDY PLANS	Via Argentina 52, 09042, Monserrato (CA), Italy info@modernwoodenboat.com www.modernwoodenboat.com
DATE: Sept. 2014	SCALE 1:15	